



Vlaanderen
is wegen en verkeer



Large-scale renovation of the Beverentunnel

To create the tunnel of the future

The Agency for Roads and Traffic (AWV) is carrying out a major renovation of the Beverentunnel. We are carrying out several large-scale renovations to make sure that the tunnel is ready to meet the climate and energy challenges of the future. The innovations being introduced comply with European tunnel safety guidelines.



The tunnel will be provided with a **completely new road surface** and LED lighting to increase visibility and safety. The **tunnel entrances and exits will be given a new and modern look.**



Preparatory work to construct a diversion route **will begin in mid-April 2024.** Our intention is that the new tunnel should be open to all traffic by mid-2025.



We **will be renewing the fire-resistant cladding** and will also make changes to the **ventilation system** and the **emergency evacuation route.**



By carrying out the **works in phases**, we will limit traffic disruption and disruption in the surrounding area as much as possible.

The Beverentunnel in detail



A tunnel for motorised traffic on the R2 under the Waasland Canal



Located in the municipality of Beveren



In the middle of the Port of Antwerp



Links the E34 to the A12



Two traffic lanes in each direction + hard shoulder



A railway tunnel is also located next to the vehicle tunnel

1978

Start of construction work

1991

Tunnel in use

2019

Installation of safety system that includes restricting traffic entering the tunnel

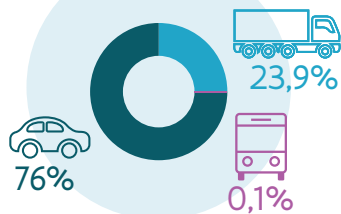
2024

Start of thorough renovation

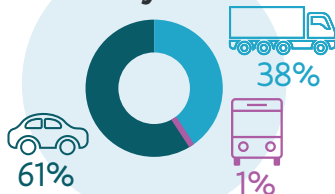
A busy connection

According to our count, up to 1,500 vehicles per hour, or **4.75 million per year** pass through the tunnel in each direction.

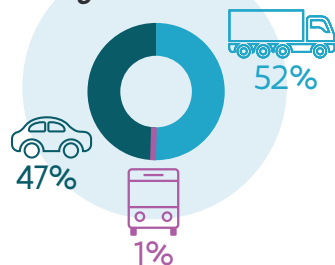
During rush hour



In the daytime

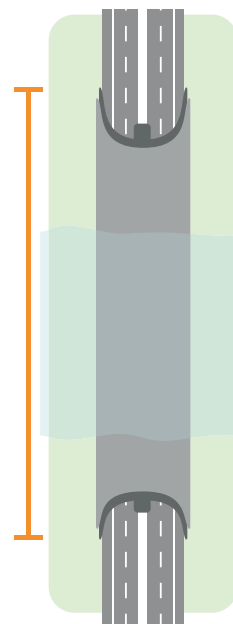
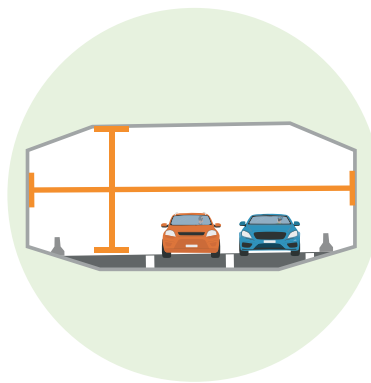


At night



Dimensions

The tunnel is **1,070 metres long**. Each tunnel is **14.5 metres wide** and **5 metres high**.



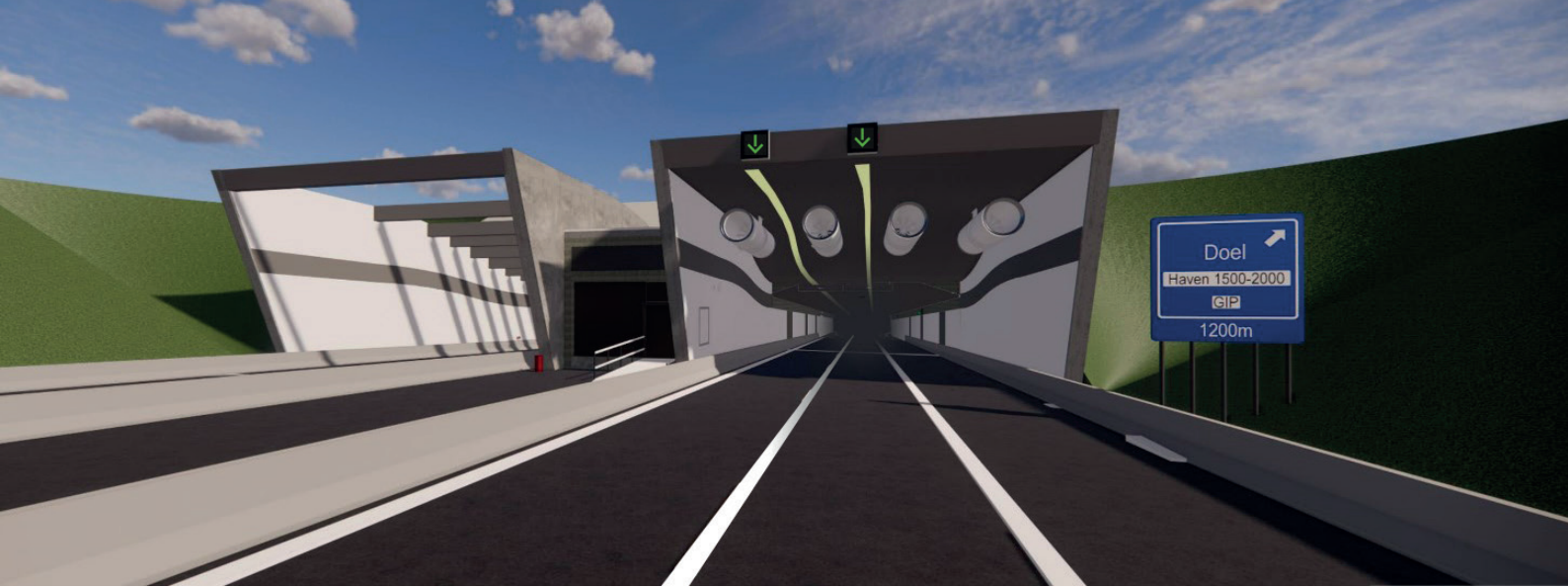
Renovation works from 2024 onwards

Focus on safety and sustainability

We will be updating the tunnel to bring it into line with the latest safety standards and will be getting it ready to meet the energy and climate-related challenges of the future.

Anticipated cost: €125 million, including VAT

AWV has appointed the contractors' consortium 'TM Bever' to carry out the project. The consortium consists of BESIX, BESIX Infra, BESIX Unitec, STADSBADER, STADSBADER CONTRACTORS and Equans.



This visualisation is an impression of how the Beverentunnel will look in the future. Please note that it is purely a draft and is not binding.

The design



A solar farm on the tunnel roof on the north side and a water treatment plant and infiltration basins.



We are switching to sustainable LED lighting.



A completely new ventilation system that is capable of combating the smoke generated by the most severe (chemical) fires.



We are rebuilding the centre tunnel channel (and the escape route) with new escape doors, a broadcasting system and segregated technical areas.



A new roadway with a concrete surface treatment and a wider hard shoulder.



The fireproof panels, fire risers, cameras and power and communication cables will all be replaced. New sensors will monitor the structural condition in the tunnel.

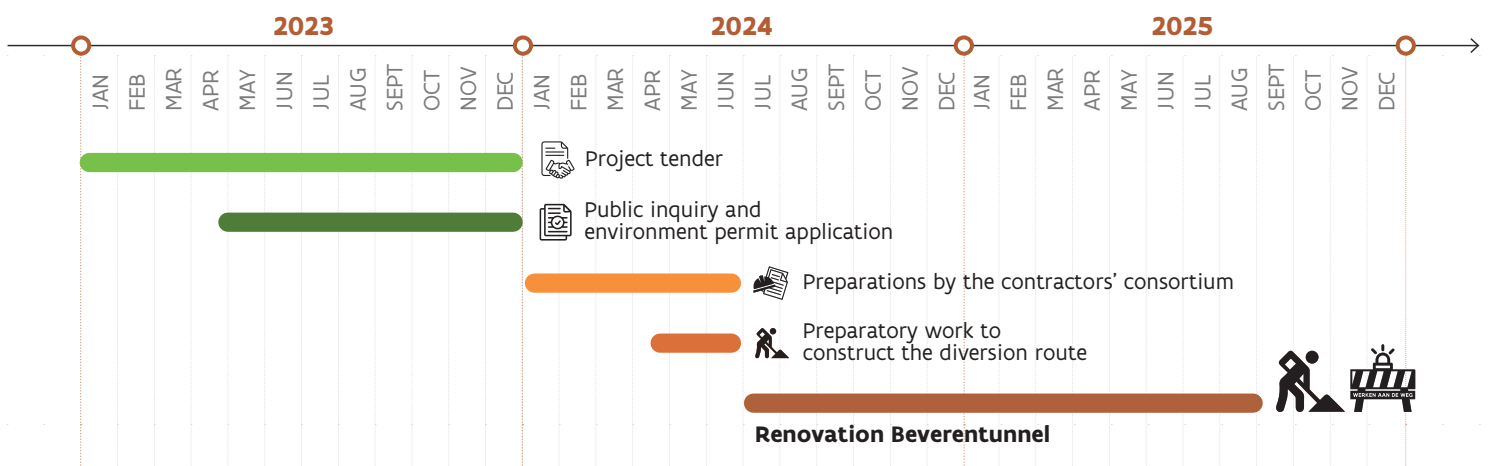


New tunnel controls will be installed inside a renovated service building. The – computerised – control system will assist the operator in the Flemish Traffic Centre. This will allow us to evacuate the tunnel more quickly during an emergency.

Timeline of the project

Work will take place until mid-2025

We applied for the integrated environment permit in June 2023 and we obtained it at the end of December 2023. Preparatory work to construct the diversion route will begin in mid-April 2024. Renovations to the tunnel itself will begin in the summer and are expected to take six months in each direction. If all goes according to plan, the renovated tunnel could reopen in mid-2025.



Disruption to traffic

The works will be intensive. However, we are trying to limit the disruption by carrying out the renovations in phases. The works on the tunnel will last for six months in each direction.

During the works, **traffic from the north heading towards Ghent will follow a diversion** via Ploegweg - Ketenislaan along the Kallo lock complex - Steenlandlaan, in order to reach the R2 via the Waaslandhaven-Zuid complex.

Traffic from the south heading towards the Netherlands will still be able to pass through the Beverentunnel, either through the designated tunnel or via the tunnel normally used for traffic going in the opposite direction.

ADR traffic (transportation of hazardous materials) heading towards the Netherlands will follow a diversion via the Waaslandhaven-Zuid complex - Hazopweg - Blikken - Sint-Antoniusweg. ADR traffic heading towards Ghent will travel via Ploegweg - Ketenislaan - Steenlandlaan.

To view all of the planned diversions, please visit wegenverkeer.be/beverentunnel



Would you like more information?



Stay up to date!

Want to stay informed while the works are going on? If so, subscribe to the newsletter! That way, you will receive all updates about the project directly in your mailbox.

Scan the QR-code or visit wegenverkeer.be/beverentunnel.



Take a look at the webinar!

On our website you will find a presentation detailing how the works will progress. We explain step by step what we will be doing during the renovation and what impact this will have on traffic.

Scan the QR-code or visit wegenverkeer.be/beverentunnel.



Contact

Any more questions about the renovation of the Beverentunnel? If so, do not hesitate to contact us.



bereikbaar.antwerpen@wegenverkeer.be



+32 (0)468 03 53 84 (Monday to Friday, between 9am and 5pm)